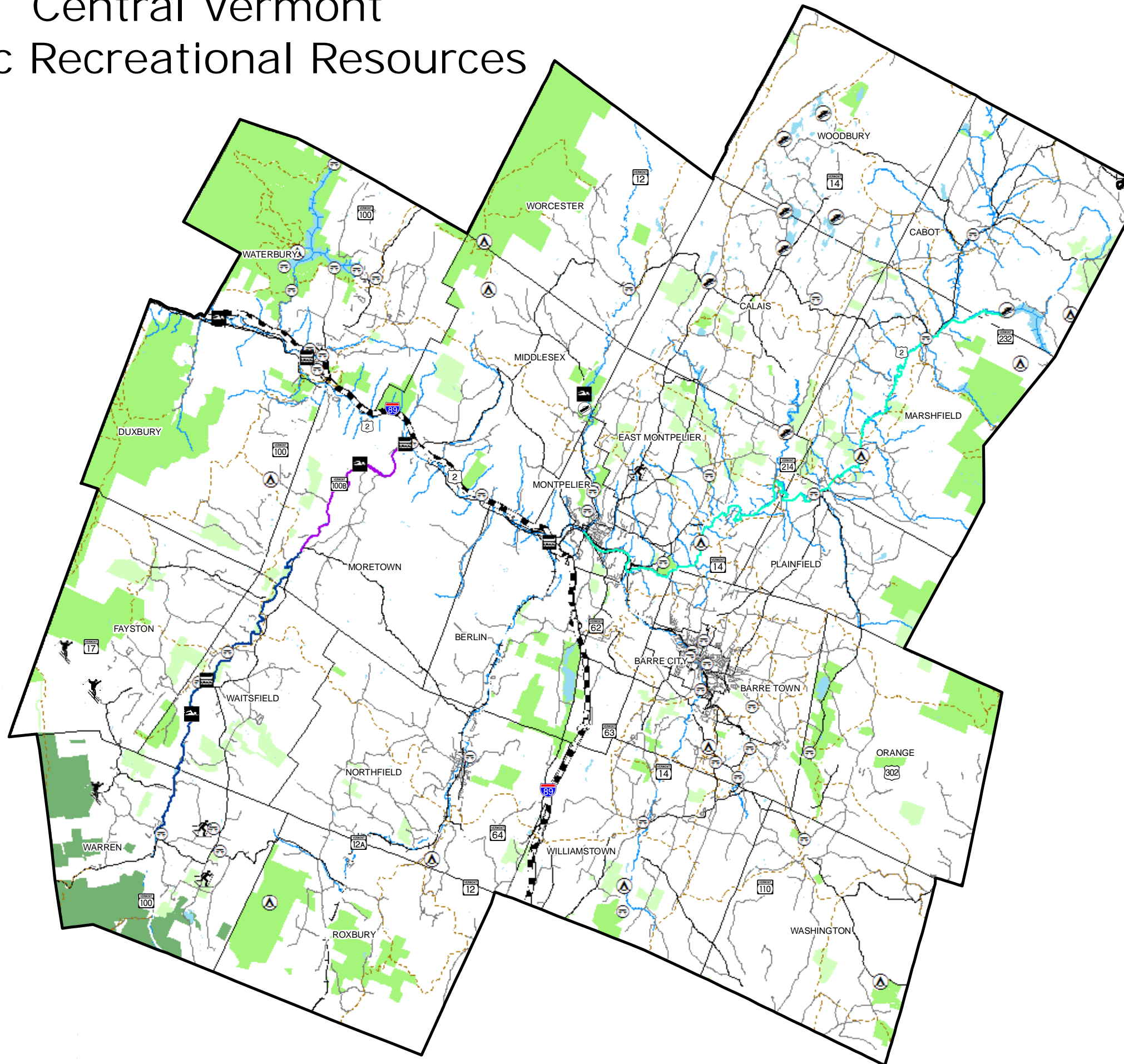


Central Vermont Public Recreational Resources



Legend

Conserved Lands

- Green Mountain National Forest
- State and Municipal Public Lands
- Private Conserved Lands

Recreational Sites

- Alpine Skiing
- Nordic Skiing
- Boat & Fishing Access (Lakes, Ponds, & Marshes)
- Swimming Areas
- Canoe Access
- Public Campgrounds
- Public Recreational Fields & Parks
- Trails (VAST, Long Trail, Catamount Trail, etc.)

Recreational River Uses

- Expert Kayaks & Open Boats
- Mixed / Whitewater Rapids
- Open Boats

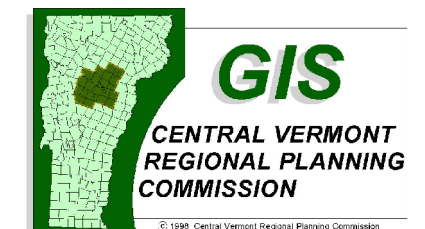
Roads:

- Class 1 Town Highway
- Class 2 Town Highway
- Class 3 Town Highway
- State Highway; US Highway
- Interstate



0 1.75 3.5 7 Miles

1 inch equals 3.5 Miles



Data Source:
 Conserved Lands: UVM, 2005
 Recreational Sites: VCGI, 2007
 Recreational River Reaches: ANR, 2007
 Roads - VTrans, VGIS 2007
 Tourism Trails: ANR, 2007
 Created 2/25/08 by CVRPC
 M:/Region/RegionalPlan_Update2008/GIS/
 Maps/Public Recreational Resources.mxd

Data is only as accurate as the original source materials. This map is for planning purposes. This map may contain errors and omissions.