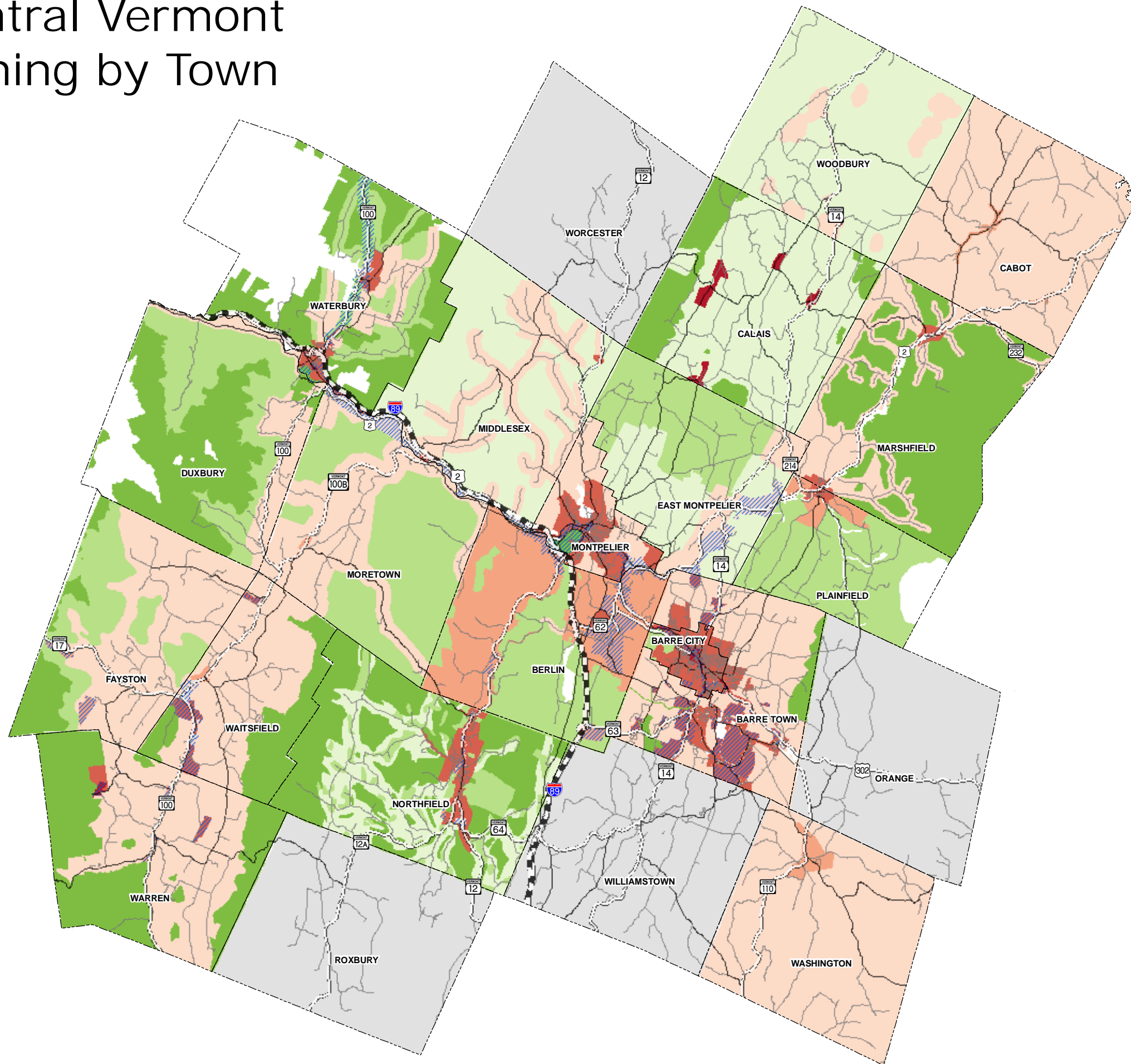


Central Vermont Zoning by Town



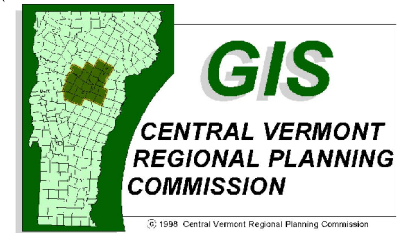
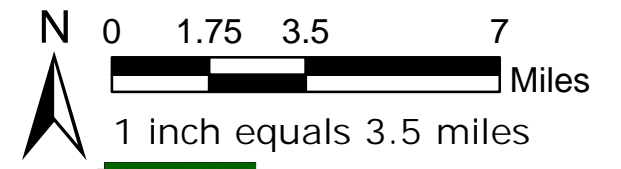
Legend

Residential Zoning by Density

- No Development
- No Minimum Lot Size
- 0 - 0.49 Acres
- 0.5 - 0.99 Acres
- 1 - 2.99 Acres
- 3 - 4.99 Acres
- 5 - 9.99 Acres
- 10 and Greater Acres

Commercial Zoning by Density

- No Development
- No Minimum Lot Size
- 0 - 0.49 Acres
- 0.5 - 0.99 Acres
- 1 - 2.99 Acres
- 3 - 4.99 Acres
- 5 - 9.99 Acres
- 10 and Greater Acres
- No Zoning



Data Source:
 Zoning: Data obtained from Towns and CVRPC
 Roads - VTrans, VGIS 2007
 Regional Boundaries - VCGI 2006

Created 3/11/08 by CVRPC
 M:/Region/RegionalPlan_Update200/GIS/Maps/CVRegion_Zoning.mxd

Data is only as accurate as the original source materials. This map is for planning purposes. This map may contain errors and omissions.